

International Land Management Solutions from AED-SICAD

LM on ArcGIS®, the new product line from AED-SICAD, completes the company group's portfolio for cadastral and topographical applications world-wide. It comprises all components from data collection and qualification to data management and viewing.

LM on ArcGIS® is the product line for cadastral and topographical applications from AED-SICAD. Thoroughly optimized applications complement each other and can be combined to a completely uniform "look-and-feel". All components are developed on open technologies, so that, based on the cadastral or topographical data, all GIS related topics of governmental or private organizations (city councils, land reallocation authorities, public works, utilities etc.) can be embedded as complementary procedures. The data model can be flexibly enhanced and configured externally. Based on the ArcGIS technology, all modern resources of object relational data storage are used, independent from database vendors (Oracle, IBM Informix, SQL Server Microsoft, etc.). The product family offers comprehensive functionality - tailored for cadastral and topographical authorities.

With the **Edit component**, the customer receives a comprehensive

product package, for all tasks regarding collection and quality check of geodata. In addition to the numerous import and export functions (GML, DXF, DWG, TIFF, Shape, etc.), the package provides a complete cadastral and topographical data editor, as well as

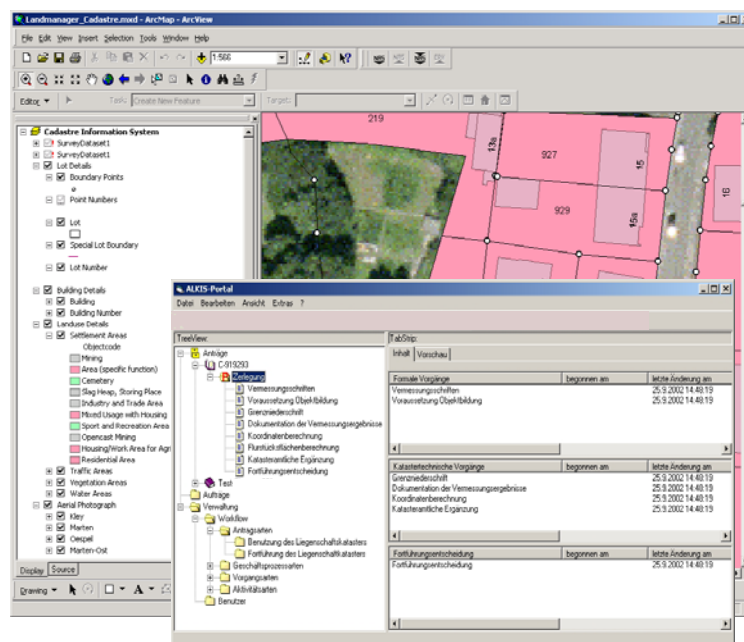
surveying calculation functions and comprehensive routines for the quality check of the captured data.

A central and customizable workflow management system supports and guides the user in his specific tasks. Single work steps and their results are stored homogeneously and can be re-accessed and continued. Each workplace can be optionally completed by further extensions, e.g. enhanced survey calculations, property data editor, control point data editor, as well as a topographic-cartographic component for smaller scales.

The storage and maintenance of the cadastral data

is managed by the

Server component. It provides the complete functionality for data maintenance and final quality check. By means of a web-based user interface, administrative tasks like user and workflow management can be supervised. The server component can optionally be operated standalone, interacting with other software solutions (XML



request, GML-based import and export). In joint configuration with the Edit component, it offers the additional benefit of direct access to all cadastral data.

The **Viewing components** (web-based and desktop) provide for all related tasks to be performed -

from cadastre-compliant data visualization in the internet to comprehensive data analysis and enquiry. Extensive selection and search mechanisms for presentation and usage of cadastral data are available.

Web-based functions for viewing and usage of cadastral data can be easily accessed via an internet browser, analysis and enquiry tasks can additionally be performed at the desktop work place.

Contact:

AED-SICAD Aktiengesellschaft
 Mallwitzstraße 1 – 3
 D - 53177 Bonn
 Tel. +49 228 95 42 0
 Fax. +49 228 9542 111
 Lilienthalstraße 7
 D - 85579 Neubiberg / Munich
 Tel. +49 89 45026 0
 Fax. +49 89 45026 102
 www.aed-sicad.com

© 2006. ESRI, ArcGIS und ArcIMS are registered trademarks of ESRI Inc.

